
Lunar collection

Version 8.5

*A faux leather upholstery
fabric for indoor seating*

Fire retardant
Waterproof
Hard wearing
Anti-fungal
Anti-bacterial
Phthalate Free
REACH Compliant

Lunar collection



AGUA

LUXURY PERFORMANCE FABRICS

Practical faux leather fabrics for the most demanding environments.

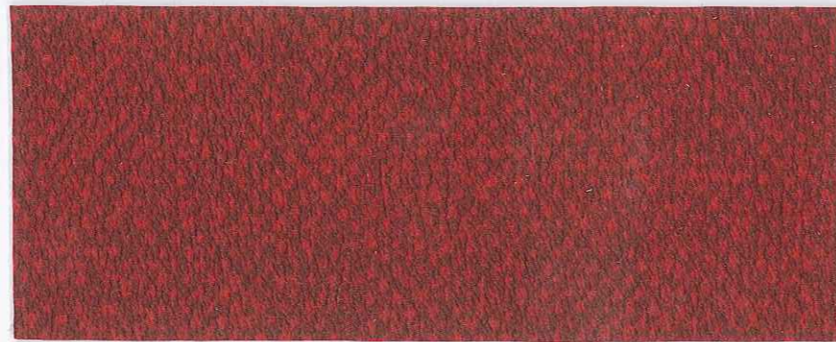
Perfect for
Hotels
Leisure
Restaurants
Hospitality
Healthcare
Spas
Clubs
Cruise Liners

Use for
Fixed Seating

Lunar



Red Scorpio



Red Aquarius



REACH Compliant

Fabric Specifications

Flame retardant	BS7176 Crib 5, BS EN 1021-1:2006 0 & 1, IMO Resolution A652 (16), M2. Available as Crib 7 for minimum orders of 500m
Anti-bacterial/ Anti-fungal	Will not support microbial or fungal growth including Salmonella, E Coli and MRSA
Waterproof	Hydrostatic Head BS3424 > 1 metre
Martindale abrasion	> 100,000
Physical Properties	BS 2543:2004 Contract Grade
Composition	Coating: 2% PU, 80% PVC, 18% Polyester Weight: 700gm ±5% Thickness: 1.20mm ±5%. 140 cm (55") wide
Making up	Can be stitched, tacked and glued. Cannot be heat welded Do not mark back of fabric with felt or ball-point pen

Lunar can be colour co-ordinated with other Agua collections to produce dual textured finishes. Bespoke designs can be printed subject to minimum quantity orders. Please note that all fabric offered is subject to minor tolerance in respect of shade and other slight variations.



For further information and samples contact
Agua Fabrics

T +44 (0)20 8205 0050
F +44 (0)20 8205 0660
E samples@aguafabrics.com

www.aguafabrics.com

Fabric Care

Remove all stains immediately before they set

Always try cleaning products on a hidden piece of fabric to test suitability

Use a vacuum cleaner or soft brush to remove dust and solid particles

Most stains can be removed using cold/warm water and a clean microfibre cloth

Use cold water when treating stains caused by bodily fluids

Stains from products containing oil and grease should be treated with a spirit based solution

Clothing dyes and biro are very difficult to remove from any fabric and may cause permanent stains

Do not use marker pens on the back of the fabric

If soap based cleaners are used, all soap residues must be rinsed from the fabric

For infection control situations this fabric can be cleaned with mild Hypochlorite solutions (10,000 ppm of available chlorine) e.g.: Haz Tabs, Chlor-Clean. Continued use may cause discolouration and surface damage

Can be steam cleaned in situ

Do not machine wash or dry clean

Do not use: solvents, abrasives, chemical agents, waxes or polishes

Please refer to fabric care sheet on the Agua website for further details

Other Collections

Juno collection
Chenille fabric for indoor upholstery

Linetta collection
Linen look fabric for indoor upholstery and curtains

Classic collection
Flat woven fabric for indoor upholstery and curtains

Cashmir collection
Luxuriously soft fabric for indoor upholstery and curtains

Libra collection
Soft upholstery fabric for indoor seating and curtains

Strata collection
Soft and flexible fabric for indoor upholstery

Nova collection
Soft feel, microfibre fabric for indoor seating and curtains

Evoke collection
Plush, textured fabric for indoor upholstery

Taurus collection
Designer faux leather fabric for indoor upholstery

Paint Pot collection
Striking faux leather for indoor upholstery

Derrytex collection
Dramatic dual textured fabric for indoor upholstery

Mystique collection
Stunning faux leather fabric for indoor upholstery

Furnisoft PU collection
Soft, breathable faux leather for indoor upholstery

Vistas collection
Embossed faux leather for indoor upholstery

Ocular collection
Wood effect faux leather for indoor upholstery

The 7 collection
Fire retardant upholstery fabric to BS7176 Crib 7

Aries collection
UV resistant faux leather for outdoor and indoor seating

Aura UV collection
UV resistant upholstery fabric for outdoor seating



Certificate No. FS-531220

Agua Fabrics
Hyde House, The Hyde
London NW9 6LH

T +44 (0)20 8205 0050
F +44 (0)20 8205 0660
E info@aguafabrics.com

www.aguafabrics.com